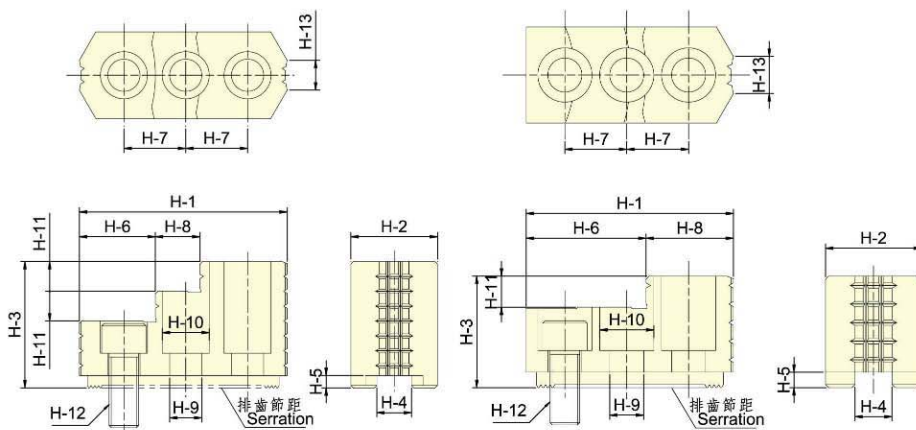


標準硬爪



STANDARD HARDENED JAW



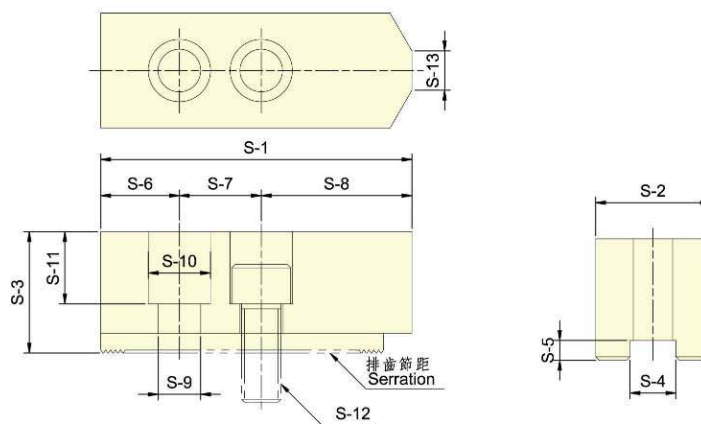
保留規格修改的權利
Subject to technical changes.

尺寸 Dim 型式 Model	H-1	H-2	H-3	H-4	H-5	H-6	H-7	H-8	H-9	H-10	H-11	H-12	H-13	排齒節距 Serration Pitch	適用夾頭 Matching Chuck	三爪重量(kg) 3 Jaw Weight (kg)	參考圖 Reference Drawing	
HJ05	53	23	27.5	10	4	30.5	14	22.5	8.5	13.5	10	M8	6	1.5x60°	3H-04,3H-05	1.0	Fig.2	
HJ06	67	31	35	12	5	39	20	28	11	17	12	M10	10		3H-06,3P-06	1.7		
HJ08	86	35	51	14		31	25	18	13	19	M12	12	3H-08,3P-08		2.0	Fig.1		
HJ10	99.5	40	54	16	43	30	17	17	25	17	M16	30	3H-10,3P-10		3.0	Fig.2		
HJ12H	103	50	52	21	62.5		40.5	15	22	M14	43	3H-12,3P-12	3.5					
HJ12P				18	15	22	M14	43	3P-12	3.6								
HJ15H	149	62	86	22	8	63	43	34	21	32	20	M20	43		3H-15, 3H-18	9.6	Fig.1	
HJ15P				25.5	6										21	32		20
HJ21	159.5	80	90	25	9	104.5	50	55			40		55		3.0x60°	3H-21, 3H-24 3P-21, 3P-24, 3V-32	14.3	Fig.2

標準生爪



STANDARD SOFT BLANK JAW



保留規格修改的權利
Subject to technical changes.

尺寸 Dim 型式 Model	S-1	S-2	S-3	S-4	S-5	S-6	S-7	S-8	S-9	S-10	S-11	S-12	S-13	排齒節距 Serration Pitch	適用夾頭 Matching Chuck	三爪重量(kg) 3 Jaw Weight (kg)	
SJ04	52	23	23	10	5	10	14	28	9	14	13	M8	3	1.5x60°	3H-04,3P-04	0.5	
SJ05	62	25	30					38							11	17	24
SJ06	73	31	36	12		15	20	24	M10	14	3H-06, 3L-06 3P-06, 3M-06	1.5					
SJ08	95	35	37	14		24	25	46	13	19	22	M12	16		3H-08, 3L-08 3P-08, 3M-08	2.4	
SJ10	110	40	42	16		30	30	50	13	19	27	M12	18		3H-10, 3L-10 3P-10, 3M-10	3.7	
SJ12H	130	50	50	21		40	30	60	18	26	33	M16	23		3H-12, 3L-12, 3V-12 3P-12, 3M-12	6.3	
SJ12P				18					16	23	M14	23	3P-12		6.5		
SJ15H	165	62	62	22		8	37	43	85	21	32	38	M20		-	3H-15, 3H-18	12.6
SJ15P				25.5												8	37
SJ21	180	65	70	25		9	40	60	80			45			3.0x60°	3H-21, 3H-24, 3P-21 3P-24, 3V-21, 3V-24, 3V-32	15.8