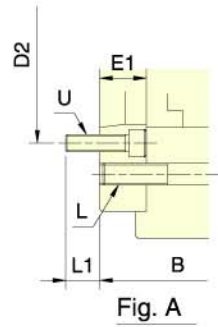


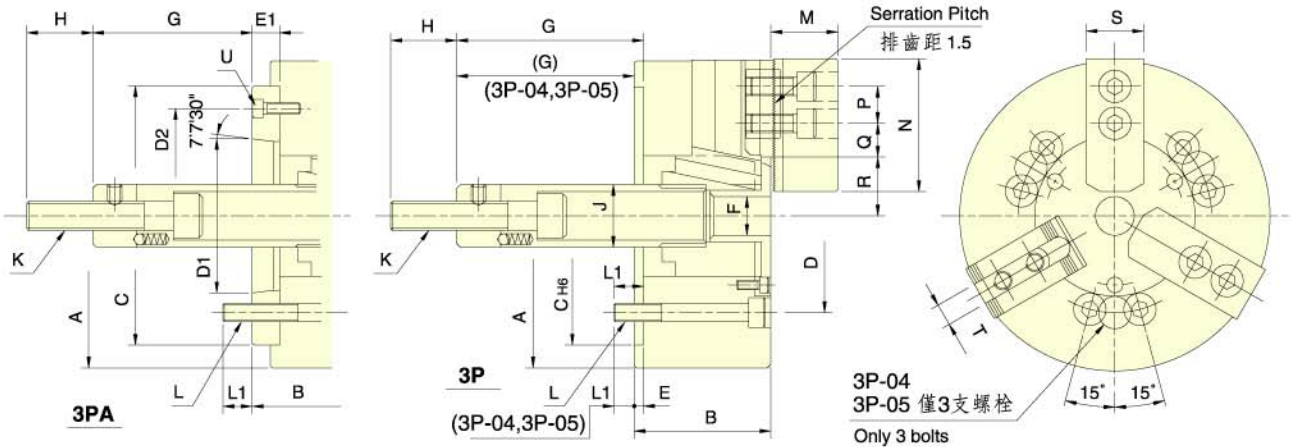
中實動力夾頭(一)

3P / 3PA

POWER CHUCK (1)



3P-08A5
3P-10A6
3P-12A6
Refer to Fig.A



保留規格修改的權利
Subject to technical changes.

註：紅色數據為3P-A型之寸法。
The dimensions and the specifications of 3P-A type are in the red data.

規格 Spec. 型號 Model	根心行程 mm Plunger stroke	爪行程(直徑) mm Jaw stroke(Dia.)	夾持直徑 Chucking Dia. mm 最大 Max. 最小 Min.	容許油壓缸推力 kN(kgf) Max. D.B. pull	最大夾持力 kN(kgf) Max. clamping force	最高迴轉數 min ⁻¹ (r.p.m) Max. speed	I kg·m ²	重量 kg Weight	適用迴轉缸 Matching cyl.	最大使用壓力 Max. pressure Mpa (kgf/cm ²)
3P-04	15	6.4	110	5	8.1 (830)	22.5(2300)	0.01	4.1	RH-80	2.2(22)
3P-05			135	14		5500	0.02	6.2	RA-130	0.6(6)
3P-06	A5 20	8.5	165		17.9(1830)	52.4(5350)	0.05	13	RH-100K RA-170	3.0(30) 0.6(6)
3P-08	A5 21	8.8	210	17	25 (2550)	74.5(7600)	0.14	24	RH-125K	2.6(26)
	A6 27									0.5(5)
3P-10	A6 25	8.8	254	22	28.9(2950)	107.8(11000)	0.30	35	RA-220	3.0(30)
	A8 40									0.6(6)
3P-12	A6 30	10.5	304		41 (4180)	155.8(15900)	0.73	59	RH-150	3.0(30)
	A8 63									0.8(8)

寸法 Size 型號 Model	A	B	C	D	D1	D2	E	E1	F	G max.	G min.	H	J
3P-04	110	52	60	80	-	-	6	-	-	18	3	25	26
3P-05	135	55	80	100	-	-	7	-	-	9	-6	35	28
3P-06	A5 165	74	84	140	104.8	82.56	116	15	21	101.5	86.5	81.5	66.6
3P-08	A5 210	85	103	170	133.4	106.38	104.8	23	25	127	104	106	83
	A6 97		150				17	89					
3P-10	A6 254	89	109	220	171.4	139.72	133.4	25	34	158	133	133	108
			A8 102				190	18					115
3P-12	A6 304	106	125			106.38	133.4	25		163	138	133	108
			A8 118			190	18	115					

寸法 Size 型號 Model	K	L	L1	M	N	P	Q max.	Q min.	R max.	R min.	S	T	U	
3P-04	M10x1.5	3~M8	12	24	52	14	11.3	8.3	23.3	20.1	23	10	-	
3P-05	M12x1.75		14	31	62		13.5	6	30.4	27.2	25			
3P-06	A5 M16x2	6~M10	14	14	37	73	20	18	7.5	37.8	33.5	31	12	3~M6
3P-08	A5		6~M12	20	17	38	95	25	22.3	11.8	46.3	41.9	35	14
	A6	18			3~M6									
3P-10	A6 M20x2.5	6~M16	18	25	43	110	30	30.8	11.3	51.1	46.7	40	16	6~M12
				A8										18
3P-12	A6			18	51	130		48.8	12.3	61	55.8	50	18or21	6~M12
				A8										25

中實動力夾頭(二)

POWER CHUCK (2)

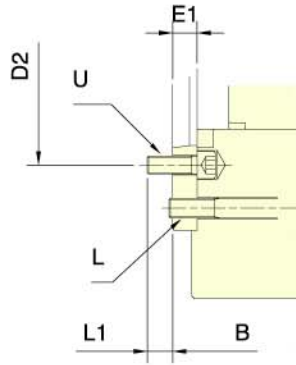
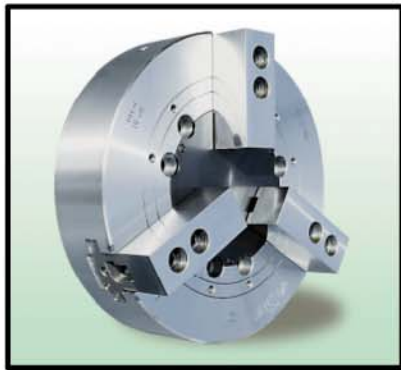
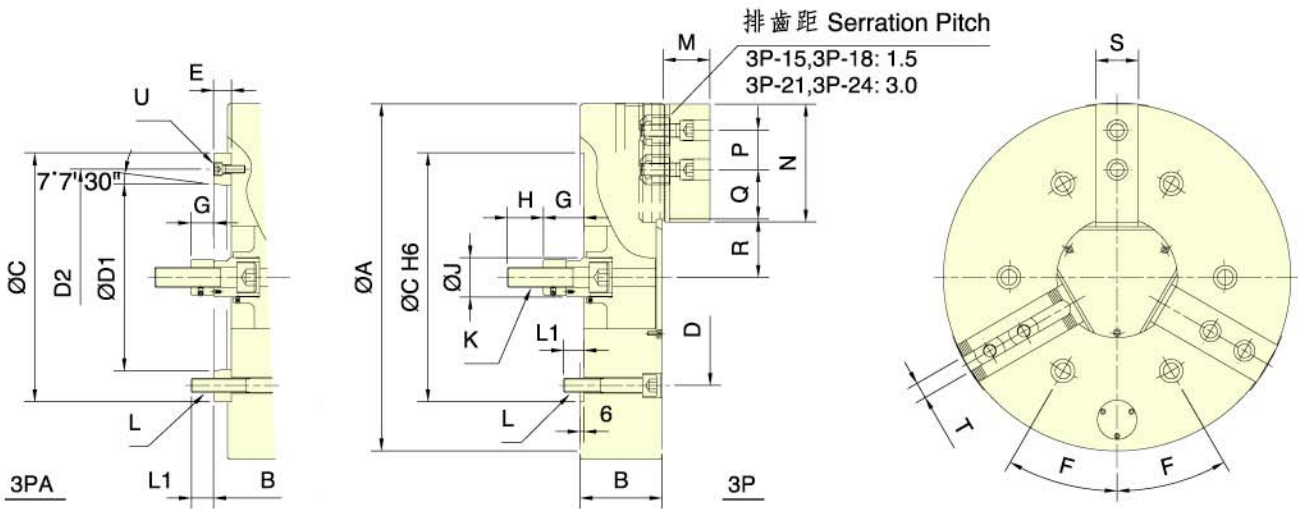


Fig. A

- 3P-15A8
- 3P-18A8
- 3P-21A8
- 3P-21A11
- 3P-24A11
- Refer to Fig.A



保留規格修改的權利
 Subject to technical changes.

註：紅色數據為3P-A型之寸法。
 The dimensions and the specifications of 3P-A type are in the red data.

規格 Spec. 型號 Model	根心行程 mm Plunger stroke	爪行程(直徑) mm Jaw stroke(Dia.)	夾持直徑 Chucking Dia. mm 最大 Max. 最小 Min.	容許油壓缸推力 kN(kgf) Max. D.B. pull	最大夾持力 kN(kgf) Max. clamping force	最高迴轉數 min ⁻¹ (r.p.m) Max. speed	I kgm ²	重量 kg Weight	適用迴轉缸 Matching cyl.	最大使用壓力 Max. pressure Mpa (kgf/cm ²)
3P-15 A8 A11	35	16	381 50	82(8360)	248.4(25350)	3000	1.95	100	RH-200 or RK-200(N)	3.2(32)
3P-18 A8 A11			450 60			2700	2.47	131		
3P-21 A8 A11 A15			530 62		1900	4.9	175	196 193 186 234 227		
3P-24 A11 A15			610 152					1750		

寸法 Size 型號 Model	A	B	C	D	D1	D2	E	F	G max.	G min.	H	J
3P-15 A8 A11	381	114	300	235	139.72	171.4	33	15°	104	71	69	36
3P-18 A8 A11					196.87	260	22			82		
3P-21 A8 A11 A15	530	125	380	330.2	139.72	171.4	27	30°	97	70	62	35
3P-24 A11 A15					196.87	235.0						
3P-15 A8 A11	450	146	380	330.2	139.72	171.4	27	30°	97	70	62	35
3P-18 A8 A11					196.87	235.0						
3P-21 A8 A11 A15	610	146	380	330.2	139.72	171.4	27	30°	97	70	62	35
3P-24 A11 A15					196.87	235.0						

寸法 Size 型號 Model	K	L	L1	M	N	P	Q max.	Q min.	R max.	R min.	S	T	U	
3P-15 A8 A11	M30x3.5	6~M20	30	29	63	165	43	48.8	23.3	77.5	69.5	62	25.5	
3P-18 A8 A11				33										29
3P-21 A8 A11 A15			6~M24	31	23	73	180	60	90.5	24.5	89	81	65	25
3P-24 A11 A15					28									